

**Other Services:**

In addition to our roofing division we also provide a complete building envelope service. We have a variety of in house tradesmen experienced with Masonry, Sheet metal, Glazing and Cladding applications. We also provide a full General Contracting service.

**Additional Services include:**

- Licenced General Contractor and Project Managers
- Full Masonry, Waterproofing and Caulking service
- Full Sheet Metal, Flashing and Metal Cladding service
- Complete Carpentry and Millwork shop

**General Contracting:**



Mattahunt School

Reliable Roofing services included:

•General Contractor, •Roofing, •Masonry, •Metal Cladding & •Finish Carpentry

**Project description:**  
This project required a completely new building envelope and new roofing system. The building remained occupied during construction with minimal impact on students and teachers.

**Carpentry:**



**Project description:**  
This carpentry project included building a curved stair case with associated Hand rail, banister, wainscoting etc.

Reliable Roofing & Sheet Metal LLC  
Framingham MA 01701  
508-628-5562

**Reliable Roofing & Sheet Metal LLC**

105 Irving Street,  
Framingham,  
MA 01701

r-roofing@hotmail.com  
tel: 508-628-5562  
fax:508-628-5563

[www.reliableroofandmetal.com](http://www.reliableroofandmetal.com)

Tom Waldron, Project Manager 617-438-9026  
David Mullins, Estimator 857-212-1833

**Testimonials:**

**Deer Island Water Treatment Plant**

"Reliable Roofing installed a completely new EDPM roofing system on various buildings within our facility. Our facility had specific requirements due to explosive gases and special use buildings. Reliable Roofing was truly accommodating in developing procedures to deal with these unusual circumstances. I found the company approachable and trustworthy and would gladly employ Reliable Roofing's services again"

Carl Linquist, Facilities manager, MWRA



Deer Island treatment plant

Reliable Roofing & Sheet Metal LLC  
Framingham MA 01701  
508-628-5562

**Reliable Roofing & Sheet Metal the only name you need for all roofing and building envelope needs!**



Regie Lewis school, Roxbury



Raymond High School, Brocton

Reliable Roofing & Sheet Metal LLC  
r-roofing@hotmail.com  
tel:508-628-5562

Reliable Roofing & Sheet Metal LLC  
Framingham MA 01701  
508-628-5562

## Introduction

Reliable Roofing & Sheet Metal LLC is a leading commercial roofing installer in Massachusetts. For almost 15 years our company has built a reputation for installing quality roofing systems at competitive prices.

## What we do

We deliver a complete roofing service including roof surveys, design consultation, new roof installations, emergency repairs and maintenance programs. We are experienced working on the most difficult applications including: high rise buildings, restricted access locations, hospitals, hazardous environments, special occupancy etc. We have a wide range of clients spanning both public and private with contracts from thousands to several millions of dollars in value.

## Our roofing specialties include:

- Cold Process Built up Roofs
- PVC & TPO
- EDPM
- Green Roofs
- Slate
- Asphalt
- Full Metal and Flashing service



Hennigan Elementary School roof replacement.

## How Leaks Affect your roof:

When a leak occurs in a roofing system, the insulation gradually reaches a saturated state. This wet insulation greatly increases the weight of the roof and significantly reduces the insulating qualities. Over time trapped moisture deteriorates the roof deck with Wood, Steel, Gypsum and lightweight Concrete the worst affected. In time the moisture finds its way into the structure causing leaks and mold to grow in affected areas. Gradually the roof deck deteriorates and after a prolonged period may become structurally unsafe.



Seriously deteriorated Steel deck



Seriously deteriorated Wood deck



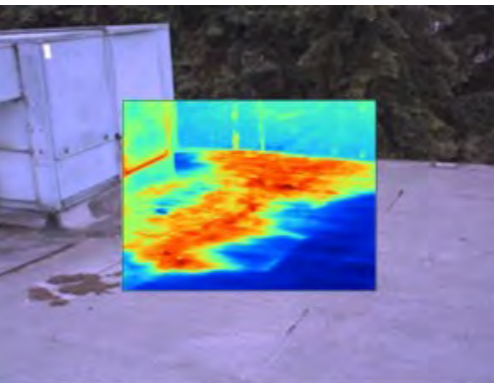
Black mold on Ceiling Tiles

## Thermographic Inspections

We now offer a non-invasive roof inspection service using thermal imaging equipment. This equipment can pin point leaks and anomalies in the roofing system and highlights areas that may need further investigation. When our survey is complete our team will assemble a report with thermal images of the affected roof areas. A thermal imaging survey can be a worthwhile investment when compared to the potential cost of roof replacement from progressive roof damage.



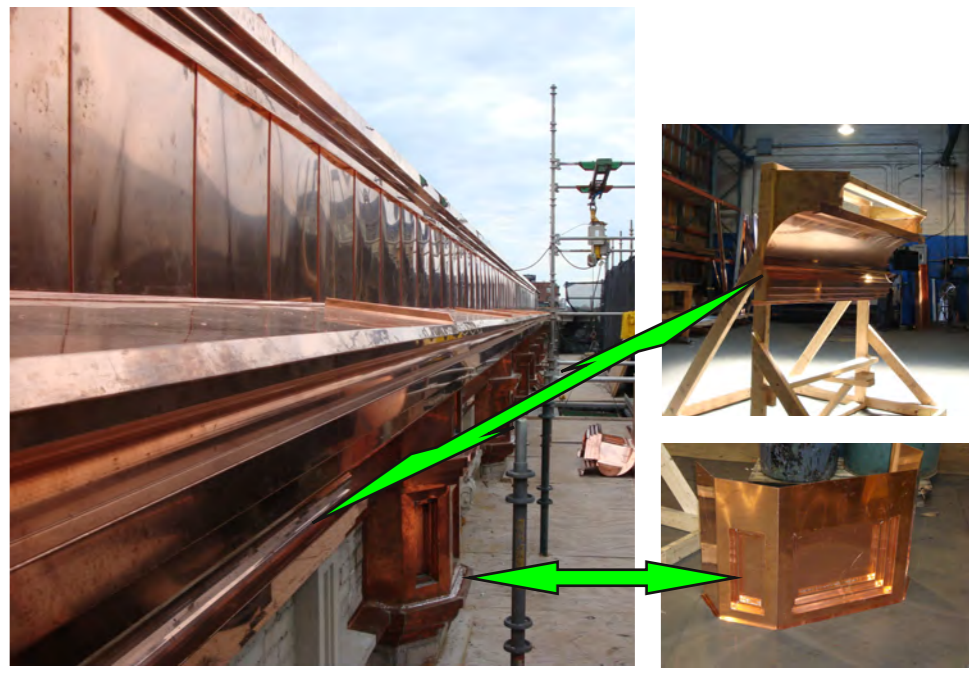
Camera image of roof area



Thermal image of roof area

## Full Sheet Metal Fabrication Service

As almost every roof requires sheet metal trims and flashing Reliable Roofing has a state of the art fabrication workshop. Our computer aided Guillotines and Breakers coupled with our experienced workforce can design and build to any desired profile. We manufacture and fit: architectural sheet metal, standing seams, flat seams, curtain walls etc. in a variety of sheet metal materials.



Architectural Copper detail at Berkley School of Music



Copper panels at Holy Cross



copper shingle roof at 128/152 north street

## Trusted Manufacturers:

Reliable Roofing is committed to installing quality roofing systems that will withstand the harsh New England climate. We source only the finest roofing materials and we are licenced installers with the following manufacturers.

